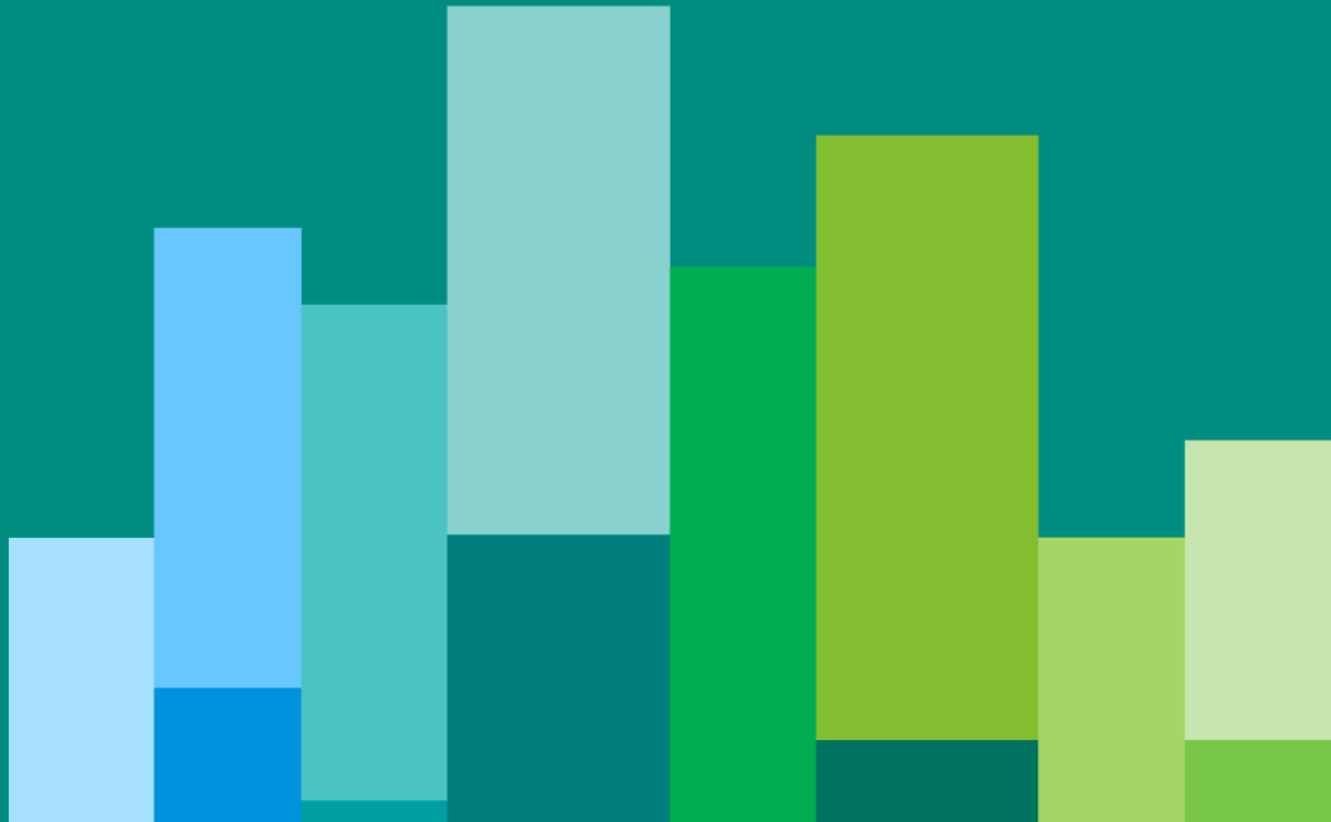


U.S. ETP MONTHLY FLASH

April 2014



Source: NYSE Arca ETP Database and ArcaVision. Statistics include only NYSE Arca listed ETPs which are derivatively priced securities that can trade intraday on a securities exchange. ETPs are typically benchmarked to indices or static baskets of stocks, futures, swap and commodities or may be actively managed. Products that fall under the ETP umbrella include Exchange Traded Funds (ETFs), Exchange Traded Vehicles (ETVs), Exchange Traded Notes (ETNs) and Certificates. ©2014 NYSE Euronext. All rights reserved. No part of this material may be copied, photocopied or duplicated in any form by any means or redistributed without the prior written consent of NYSE Euronext. NYSE Euronext and its affiliates do not recommend or make any representation as to possible benefits from any securities or investments, or third-party products or services. Investors should undertake their own due diligence regarding securities and investment practices. This publication is intended solely for informational purposes, and, while believed correct, no warranty is made of the accuracy of the data herein.

NYSE ARCA US EXCHANGE TRADED PRODUCTS (ETP)

Highlights from April 2014

- In April, 11 new ETPs listed on NYSE Arca
- At the end of April , 1,435 ETPs were listed on NYSE Arca
- US ETP notional volume represented 25.63% of all CTA issues in April 2014. This is down from 28.72% from April 2013
- US ETP daily average turnover was approximately \$70.09 billion in April 2014, down 5.49% from \$ 73.93 billion in March 2014
- NYSE Arca was at the NBBO 88.36% of the time, leading all US exchanges
- NYSE Arca had 21% of all US ETP trading volume, leading all US exchanges



NYSE ARCA US EXCHANGE TRADED PRODUCTS (ETP)

Top 10 Most Actively Traded Securities in the U.S. (by Turnover Volume) April

Symbol	Name	Product Type	Consolidated Trading Volume	Consolidated Turnover Volume (\$)	Average Daily Trading Volume	Average Daily Turnover Volume (\$)
SPY	SPDR S&P 500 ETF Trust	ETF	2,393,724,275	\$445,019,996,100	113,986,870	\$21,191,428,386
IWM	iShares Russell 2000 ETF	ETF	1,148,078,571	\$129,810,581,312	54,670,408	\$6,181,456,253
AAPL	Apple Inc.	Stock	232,634,477	\$127,680,749,719	11,077,832	\$6,080,035,701
FB	Facebook, Inc. Class A	Stock	1,896,731,372	\$112,765,750,076	90,320,542	\$5,369,797,623
QQQ	PowerShares QQQ Trust, Series 1	ETF	1,142,640,896	\$98,739,080,225	54,411,471	\$4,701,860,963
EEM	iShares MSCI Emerging Markets ETF	ETF	1,542,455,734	\$64,010,374,159	73,450,273	\$3,048,113,055
AMZN	Amazon.Com Inc	Stock	138,318,902	\$43,926,473,732	6,586,614	\$2,091,736,844
GOOG	Google Inc. Class C Capital Stock	Stock	71,354,756	\$41,101,239,917	3,397,846	\$1,957,201,901
BAC	Bank of America Corp.	Stock	2,245,079,842	\$35,974,235,753	106,908,564	\$1,713,058,845
TSLA	Tesla Motors, Inc.	Stock	165,259,304	\$34,399,256,126	7,869,491	\$1,638,059,816

Top 10 Most Actively Traded ETPs in the U.S. (by Turnover Volume) in April

SPY	SPDR S&P 500 ETF Trust	ETF	2,393,724,275	\$445,019,996,100	113,986,870	\$21,191,428,386
IWM	iShares Russell 2000 ETF	ETF	1,148,078,571	\$129,810,581,312	54,670,408	\$6,181,456,253
QQQ	PowerShares QQQ Trust, Series 1	ETF	1,142,640,896	\$98,739,080,225	54,411,471	\$4,701,860,963
EEM	iShares MSCI Emerging Markets ETF	ETF	1,542,455,734	\$64,010,374,159	73,450,273	\$3,048,113,055
VXX	iPath S&P 500 VIX Short-Term Futures ETN due 1/30/2019	ETN	710,773,132	\$30,084,929,299	33,846,340	\$1,432,615,681
EFA	iShares MSCI EAFE ETF	ETF	398,292,743	\$26,840,301,017	18,966,321	\$1,278,109,572
XLE	ENERGY SEL SECT SPDR FD	ETF	252,498,760	\$23,031,960,541	12,023,750	\$1,096,760,026
XLF	FINANCIAL SEL SECT SPDR FD	ETF	990,261,872	\$21,645,188,485	47,155,327	\$1,030,723,261
DIA	SPDR Dow Jones Industrial Average ETF Trust	ETF	131,854,009	\$21,541,494,250	6,278,762	\$1,025,785,440
EWZ	iShares MSCI Brazil Capped ETF	ETF	436,967,805	\$20,453,890,739	20,807,991	\$973,994,797

NYSE ARCA US EXCHANGE TRADED PRODUCTS (ETP)

New ETPs Launched on NYSE Arca in April

Symbol	Listing Date	Name	Product Type	Consolidated Trading Volume	Consolidated Turnover Volume (\$)	Average Daily Trading Volume	Average Daily Turnover Volume (\$)
CN	4/30/2014	db X-trackers Harvest MSCI All China Equity Fund	ETF	100,300	2,507,500	100,300	2,507,500
BYLD	4/24/2014	iShares Yield Optimized Bond ETF	ETF	20,600	516,856	4,120	103,371
OSMS	4/24/2014	Barclays OFI SteelPath MLP ETN	ETN	675	16,808	135	3,362
BCHP	4/23/2014	EGShares Blue Chip ETF	ETF	39,847	799,972	6,641	133,329
GLDL	4/10/2014	Direxion Daily Gold Bull 3X Shares	ETV	46,928	1,835,299	3,129	122,353
GLDS	4/10/2014	Direxion Daily Gold Bear 3X Shares	ETV	6,134	244,541	409	16,303
DXJF	4/8/2014	WisdomTree Japan Hedged Financials Fund	ETF	184,580	4,317,642	10,858	253,979
DXJR	4/8/2014	WisdomTree Japan Hedged Real Estate Fund	ETF	8,032	192,890	472	11,346
DXJC	4/8/2014	WisdomTree Japan Hedged Capital Goods Fund	ETF	7,296	173,166	429	10,186
DXJH	4/8/2014	WisdomTree Japan Hedged Health Care Fund	ETF	2,180	52,254	128	3,074
DXJT	4/8/2014	WisdomTree Japan Hedged Tech, Media & Telecom Fund	ETF	3,500	83,363	206	4,904

NYSE ARCA US EXCHANGE TRADED PRODUCTS (ETP)



- YTD 2014, 64 ETPs have listed in the US, 55 of which were listed on NYSE Arca
- In April, 11 ETPs listed on Arca
- NYSE Arca ETPs have a total AUM of approx \$1.66 trillion

NYSE ARCA ETPS BY ISSUER

Issuer	# of ETPs	New in April	New YTD	Turnover
AdvisorShares	23		5	\$17,166,079
ALPS	15		2	\$85,199,902
ArrowShares	1			\$952,607
Bank of America	8			\$817,299
Barclays Bank PLC	80	1(OSMS)	1	\$770,110,194
Cambria	3		1	\$2,784,499
Charles Schwab	21			\$73,888,187
Citigroup	12			\$2,389,705
Columbia Management	5			\$407,971
Credit Suisse	9			\$4,655,512
Deutsche Bank	46	1(CN)	1	\$86,306,011
db X-trackers	20		3	\$14,539,023
Direxion Shares	57	2(GLDL,GLDS)	5	\$1,403,592,417
Emerging Global	16	1(BCHP)	4	\$13,648,306
ETF Securities	7			\$5,344,230
Exchange Traded Concepts	5			\$6,451,190
FactorShares	1			\$379,380
Fidelity	10			\$15,347,765
FirstTrust	60			\$174,598,569



NYSE ARCA ETPS BY ISSUER

Issuer	# of ETPs	New in April	New YTD	Turnover
FlexShares	15			\$10,754,853
Franklin Templeton	1			\$1,428
Global X	38		2	\$58,242,572
Goldman Sachs	2			\$282,391
GreenHaven	1			\$1,169,652
Guggenheim	68			\$129,133,723
Horizons ETFs	3		1	\$667,049
HSBC	1			\$160,936
Huntington	2			\$2,217,557
Index IQ	11			\$6,085,930
Invesco PowerShares	99		1	\$1,434,003,090
iShares	247	1 (BYLD)	8	\$7,407,742,004
Jefferies	1			\$84,208
JPMorgan Chase & Co.	1			\$11,056,454
Krane Shares	2		1	\$1,630,310
LocalShares	1			\$215,346
Market Vectors	58		5	\$1,235,333,354
Morgan Stanley	6			\$884,856

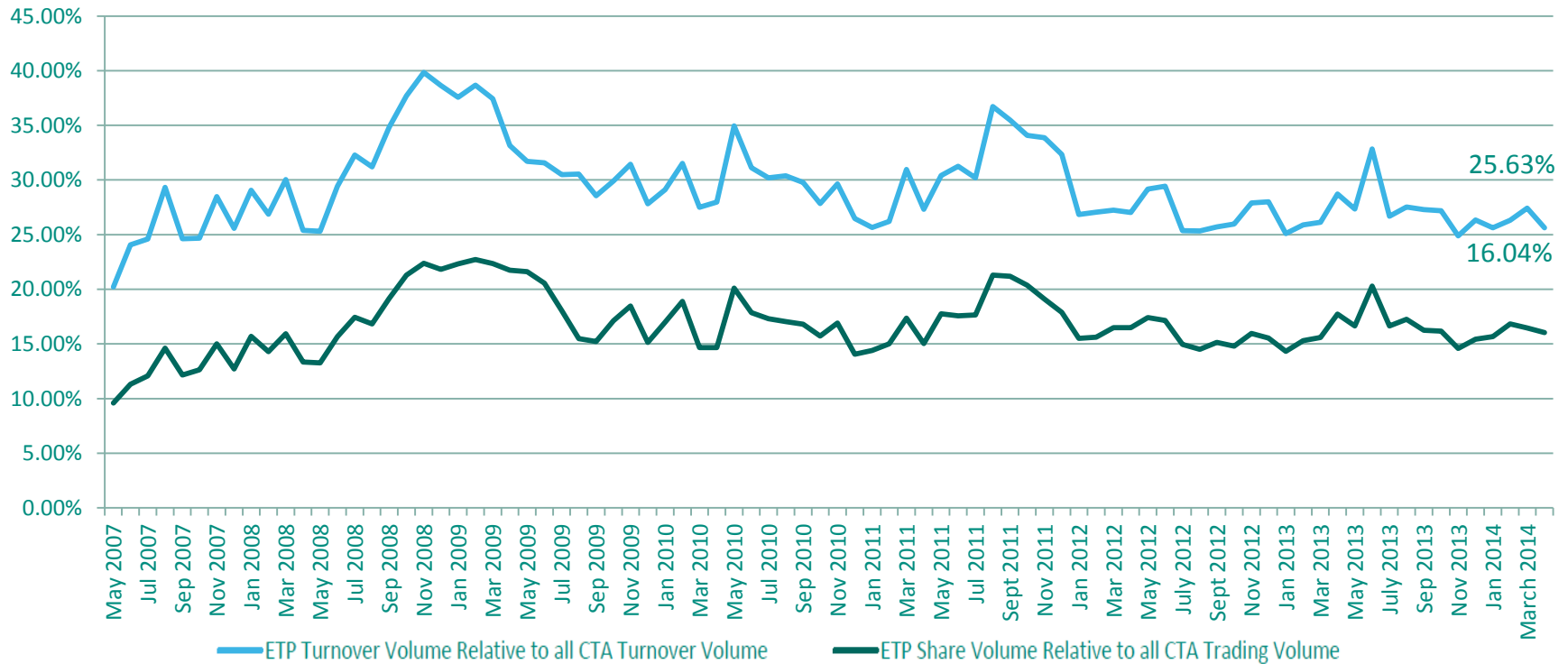


NYSE ARCA ETFS BY ISSUER

Issuer	# of ETFS	New in April	New YTD	Turnover
PIMCO	21		2	\$24,826,665
Precidian Funds	1			\$4,389,783
ProShares	136		1	\$1,625,776,285
Pyxis Funds	1			\$1,961,038
QuantShares	4			\$888,761
Renaissance Capital	1			\$400,481
RevenueShares	7			\$2,395,317
Royal Bank of Scotland	13			\$3,275,916
Russell ETFS	1			\$251,268
SPDR ETFS	130		5	\$6,061,129,939
Sprott Asset Management	3			\$21,598,625
Swedish Export Credit (SEK)	7			13352026
Teucrium	7			\$6,242,497
UBS	31		1	\$31,707,603
United States Commodity Funds LLC	12			\$219,474,423
Vanguard	48			\$962,140,622
VelocityShares	6			\$711,351,066
WisdomTree	50	5(DXJF,DXJR,DXJC,DXJH,DXJT)	6	\$256,243,549

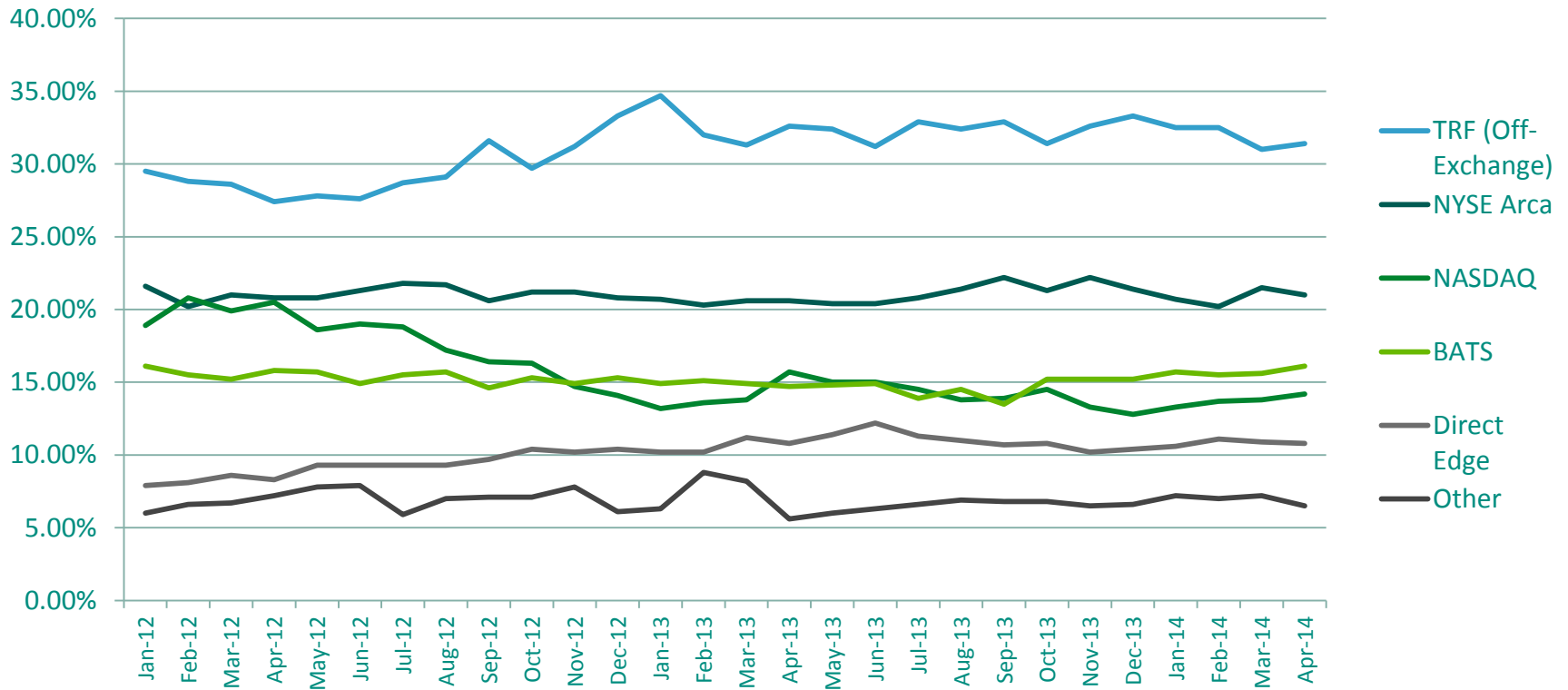


U.S. ETP CONSOLIDATED VOLUMES



- During the month of April, US ETP CADV was 1.1 billion and daily notional value was \$70.1 billion
- By the end of April, US ETP share and notional volume represented 16.04% and 25.63%, respectively of all CTA issues

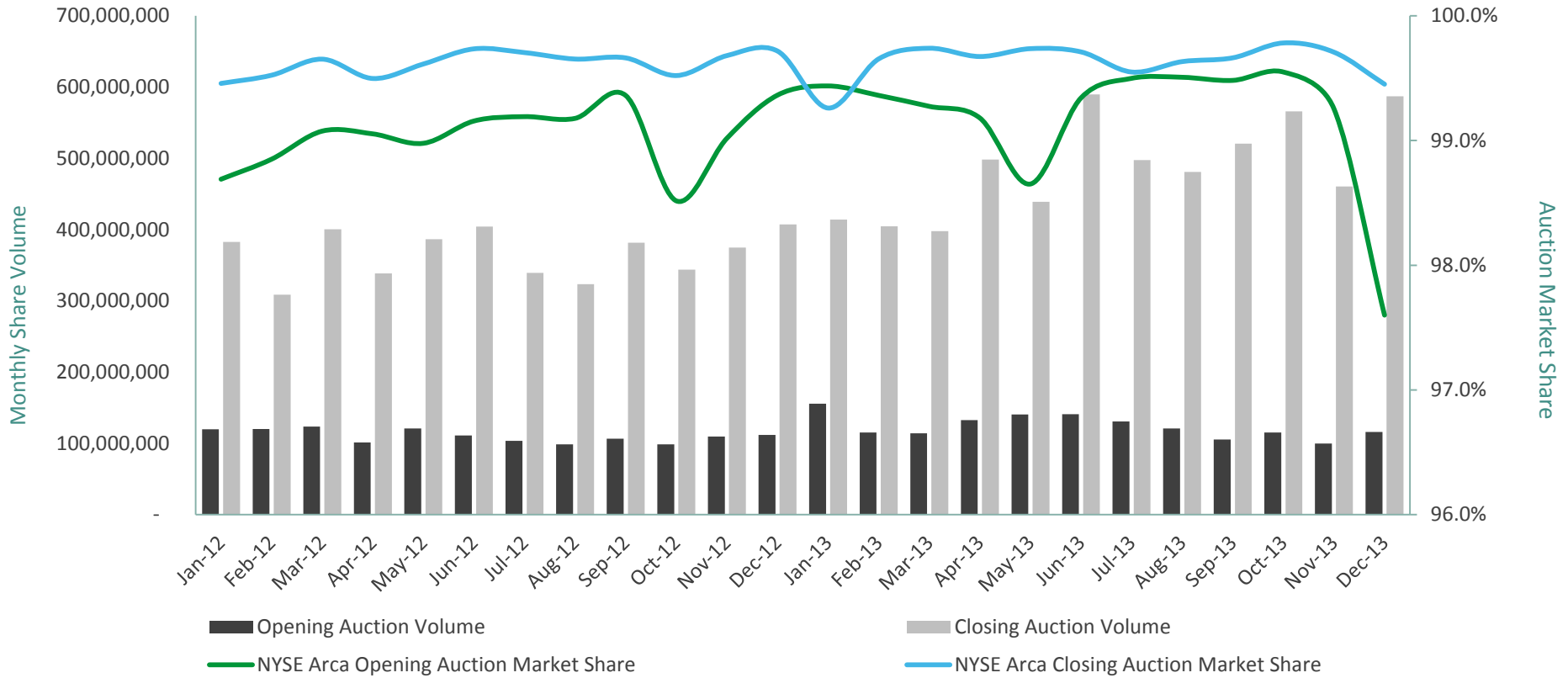
U.S. ETP MARKET SHARE BY TRADING VENUE



- In April 2014, NYSE Arca led all exchanges with an ETP trading market share of 21%
- ETP trades occurring off-exchange in April 2014 represented 31.40%



NYSE ARCA ETP OPENING & CLOSING AUCTION



DISCLAIMER

©2014 NYSE Euronext. All rights reserved. NYSE Euronext and its affiliates do not recommend or make any representation as to possible benefits from any securities or investments, or third-party products or services. Investors should undertake their own due diligence regarding their securities and investment practices.



ABOUT US

- For more information, visit <https://etp.nyx.com/>

- Contact us at: etf@nyx.com

- Follow us on:

